



NORTH FACADE

Offices and collaborative areas in the elevated north bar have unobstructed views and ample diffuse daylight. A Penrose frit pattern on the glass hints at the activities going on inside.

©Peter Aaron/OTTO
2011A47.401RE.jpg



SLYPE AND COVERED LOGGIA

Space beneath the bar is expanded by an asymmetrical vaulted ceiling and tapered concrete columns.

©Peter Aaron/OTTO
2011A47.405_edit.jpg



EAST-WEST SLYPE

The slype between the building volumes admits natural light and air, and transparent bridges allow visual connections to all levels of the building.

©Peter Aaron/OTTO
2011A47.411.jpg



LOGGIA

An asymmetrical vaulted ceiling floats the north bar above the ground plane, supported by board-formed concrete columns.

©Peter Aaron/OTTO
2011A47.433.jpg



VIEW FROM NORTHEAST

The north bar is elevated to preserve a significant portion of the existing Quad. A series of outdoor gathering spaces are beneath it.

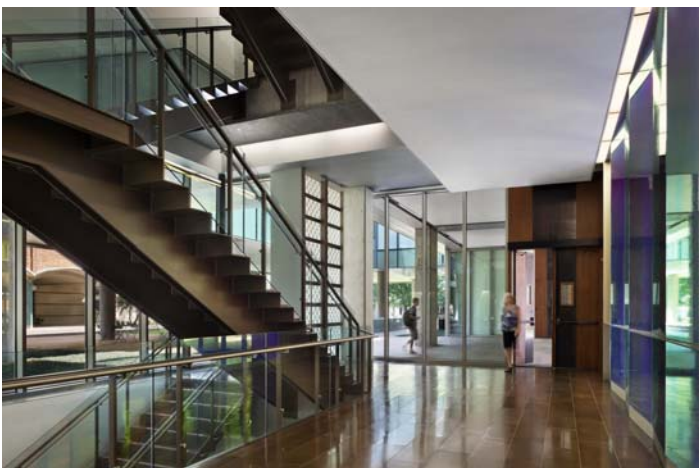
© Michael Moran/OTTO
1123_02.jpg



SOUTH FACADE

Horizontal terra-cotta baguettes over aluminum rain screen panels protect the labs from solar exposure while regulating natural light and privacy. This facade completes the courtyard for George R. Brown Hall, and creates a portal to the Science Quad.

© Michael Moran/OTTO



LOBBY AND STAIR

The central stairwell is illuminated with natural light.

© Michael Moran/OTTO
1123_22.jpg



LECTURE HALL

A gently shaped wood window screen and double vaulted plaster ceilings between concrete beams expand the space and help to moderate light and acoustics.

© Michael Moran/OTTO
1123_25.jpg